

PIELAVESI 38FT



Oil Pattern Distance: 38 Feet **Reverse Brush Drop:** 28 Feet **Oil Per Board:** 40 uL
Forward Oil Total: 16.24 mL **Reverse Oil Total:** 2.72 mL **Volume Oil Total:** 18.96 mL
Forward Boards Crossed: 406 Boards **Reverse Boards Crossed:** 68 Boards **Total Boards Crossed:** 474 Boards

	Start	Stop	Loads	Speed	Crossed	Start	End	Feet	T.Oil
1	2L	2R	2	14	74	0.0	1.9	1.9	2960
2	12L	12R	2	14	34	1.9	5.8	3.9	1360
3	2L	2R	1	14	37	5.8	7.7	1.9	1480
4	10L	10R	2	14	42	7.7	11.6	3.9	1680
5	2L	2R	1	14	37	11.6	13.5	1.9	1480
6	8L	8R	2	14	50	13.5	17.4	3.9	2000
7	2L	2R	1	14	37	17.4	19.3	1.9	1480
8	6L	6R	2	14	58	19.3	23.2	3.9	2320
9	2L	2R	1	14	37	23.2	25.1	1.9	1480
10	2L	2R	0	18	0	25.1	32.0	6.9	0
11	2L	2R	0	22	0	32.0	38.0	6.0	0

Navigation: Forward Reverse More

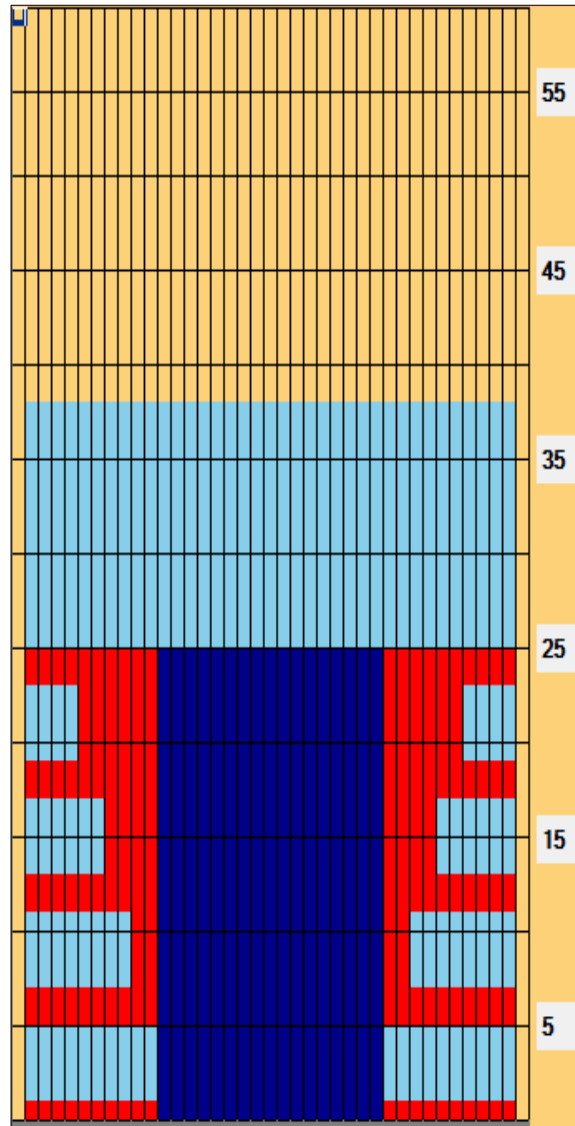
	Start	Stop	Loads	Speed	Crossed	Start	End	Feet	T.Oil
1	2L	2R	0	30	0	38.0	25.0	-13.0	0
2	12L	12R	4	22	68	25.0	12.6	-12.4	2720
3	2L	2R	0	14	0	12.6	0.0	-12.6	0

Navigation: Forward Reverse More

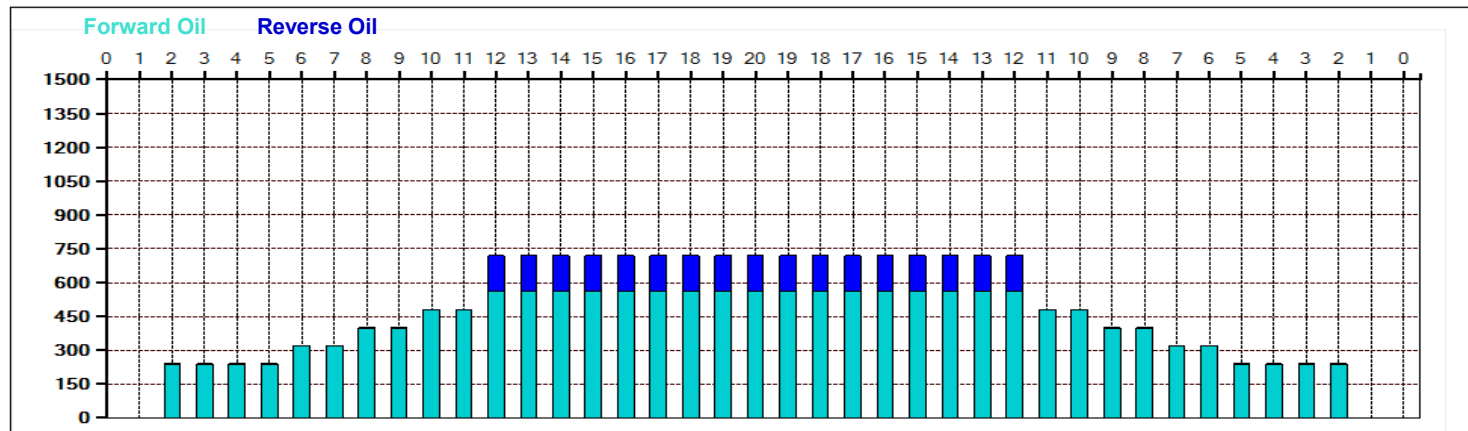
Conditioner: Brunswick W22

TransferType: Transfer Brush

- Forward
- Reverse
- Combined
- Buff



Item	3L-7L:18L-18R	8L-12L:18L-18R	13L-17L:18L-18R	18L-18R:17R-13R	18L-18R:12R-8R	18L-18R:7R-3R
Description	Outside Track:Middle	Middle Track:Middle	Inside Track:Middle	Middle: Inside Track	Middle:Middle Track	Middle:Outside Track
Track Zone Ratio	2.65	1.45	1	1	1.45	2.65



PIELAVESI 38FT



Oil Pattern Distance:	38 Feet	Reverse Brush Drop:	28 Feet	Oil Per Board:	40 uL
Forward Oil Total:	16.24 mL	Reverse Oil Total:	2.72 mL	Volume Oil Total:	18.96 mL
Forward Boards Crossed:	406 Boards	Reverse Boards Crossed:	68 Boards	Total Boards Crossed:	474 Boards
